

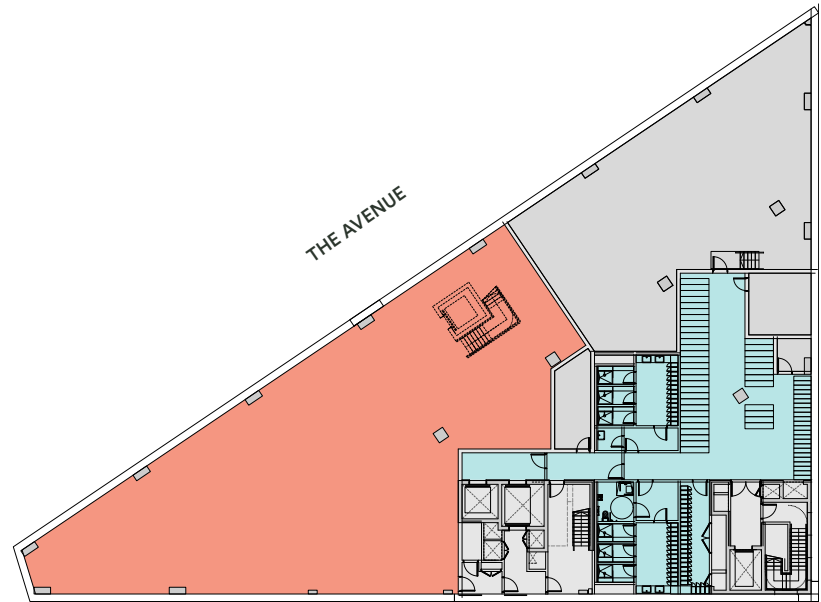
The Marker Building

E15

Lower Ground Floor

4,850 sq ft / 450 sq m

Floor	Office		Terrace	
	sq ft	sq m	sq ft	sq m
9th**	8,050	748	1,345	125
8th	9,310	865	-	-
7th	9,125	848	150	14
6th	9,125	848	150	14
5th	9,125	848	150	14
4th	9,310	865	150	14
3rd	9,505	883	150	14
2nd	9,505	883	-	-
1st	7,535	700	-	-
Ground	6,435	598	-	-
Lower Ground*	4,850	450	-	-
Total	92,000	8,545	2,095	195



The Ground and Lower Ground floor can be connected by an interlinking staircase.

* This floor can be used as offices or an alternative amenity use

** Communal terrace on 9th floor

- Office
- Core
- Terrace
- End of journey facilities
- Reception

Plans not to scale. Indicative only.



The Marker Building

E15

Ground Floor

6,435 sq ft / 598 sq m

Floor	Office		Terrace	
	sq ft	sq m	sq ft	sq m
9th**	8,050	748	1,345	125
8th	9,310	865	-	-
7th	9,125	848	150	14
6th	9,125	848	150	14
5th	9,125	848	150	14
4th	9,310	865	150	14
3rd	9,505	883	150	14
2nd	9,505	883	-	-
1st	7,535	700	-	-
Ground	6,435	598	-	-
Lower Ground*	4,850	450	-	-
Total	92,000	8,545	2,095	195



The Ground and Lower Ground floor can be connected by an interlinking staircase.

* This floor can be used as offices or an alternative amenity use

** Communal terrace on 9th floor

- Office
- Core
- Terrace
- End of journey facilities
- Reception

Plans not to scale. Indicative only.



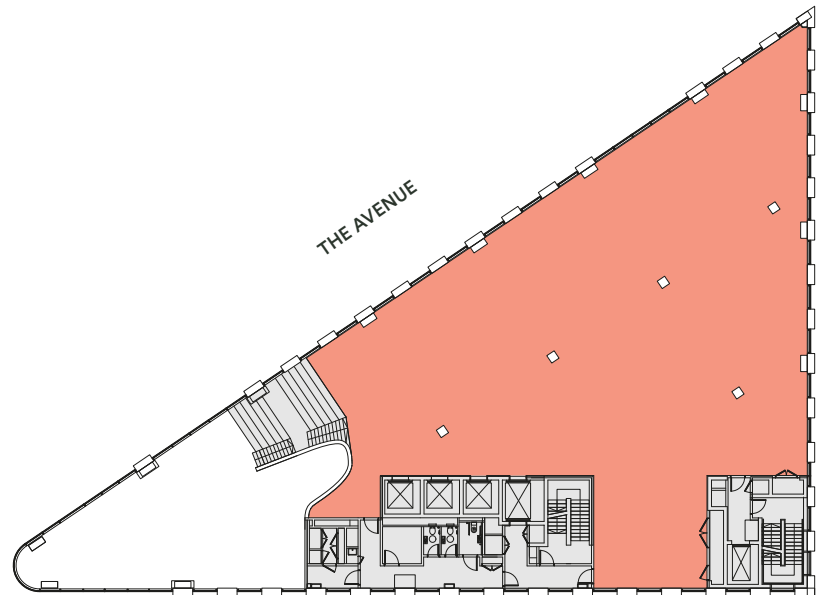
The Marker Building

E15

1st Floor

7,535 sq ft / 700 sq m

Floor	Office		Terrace	
	sq ft	sq m	sq ft	sq m
9th**	8,050	748	1,345	125
8th	9,310	865	-	-
7th	9,125	848	150	14
6th	9,125	848	150	14
5th	9,125	848	150	14
4th	9,310	865	150	14
3rd	9,505	883	150	14
2nd	9,505	883	-	-
1st	7,535	700	-	-
Ground	6,435	598	-	-
Lower Ground*	4,850	450	-	-
Total	92,000	8,545	2,095	195



The Ground and Lower Ground floor can be connected by an interlinking staircase.

* This floor can be used as offices or an alternative amenity use

** Communal terrace on 9th floor

- Office
- Core
- Terrace
- End of journey facilities
- Reception

Plans not to scale. Indicative only.



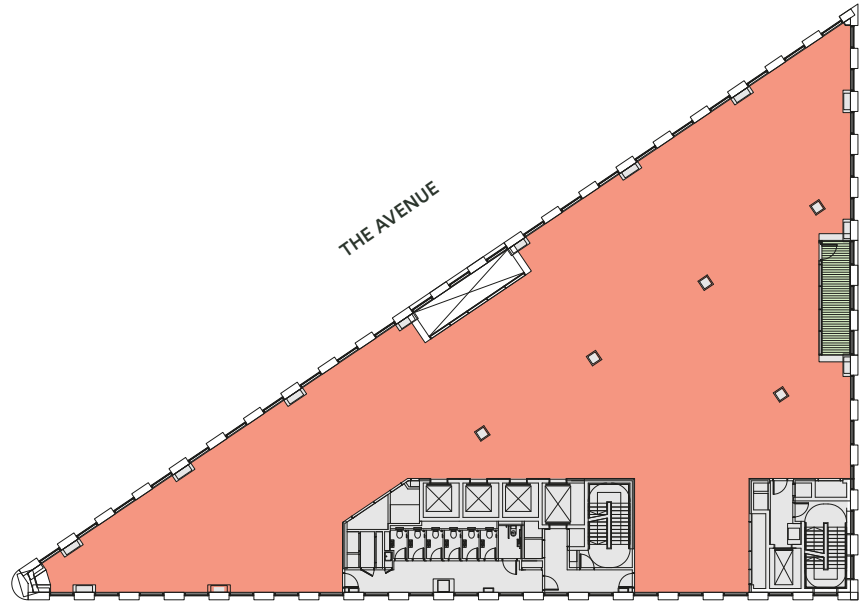
The Marker Building

E15

Typical Floor

9,125 sq ft / 848 sq m

Floor	Office		Terrace	
	sq ft	sq m	sq ft	sq m
9th**	8,050	748	1,345	125
8th	9,310	865	-	-
7th	9,125	848	150	14
6th	9,125	848	150	14
5th	9,125	848	150	14
4th	9,310	865	150	14
3rd	9,505	883	150	14
2nd	9,505	883	-	-
1st	7,535	700	-	-
Ground	6,435	598	-	-
Lower Ground*	4,850	450	-	-
Total	92,000	8,545	2,095	195



The Ground and Lower Ground floor can be connected by an interlinking staircase.

* This floor can be used as offices or an alternative amenity use

** Communal terrace on 9th floor

- Office
- Core
- Terrace
- End of journey facilities
- Reception

Plans not to scale. Indicative only.



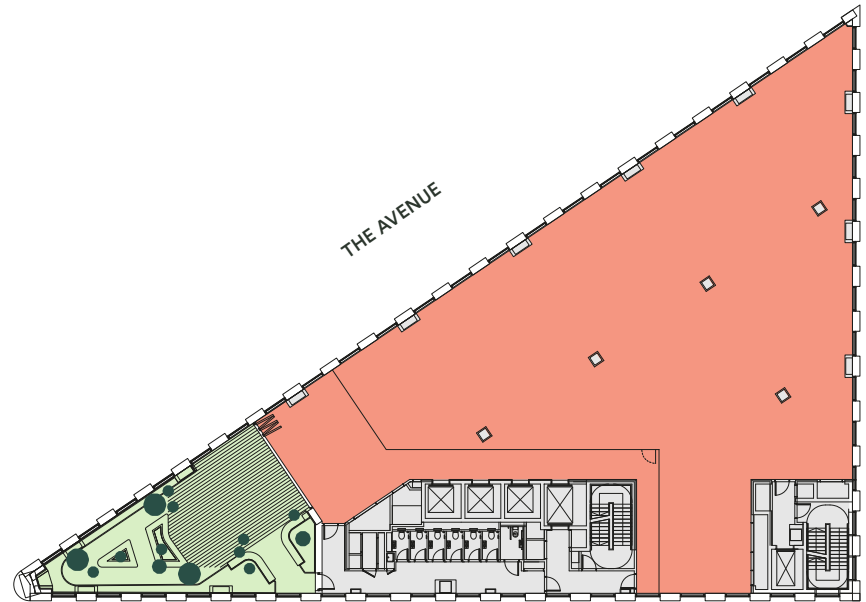
The Marker Building

E15

9th Floor

8,050 sq ft / 748 sq m

Floor	Office		Terrace	
	sq ft	sq m	sq ft	sq m
9th**	8,050	748	1,345	125
8th	9,310	865	-	-
7th	9,125	848	150	14
6th	9,125	848	150	14
5th	9,125	848	150	14
4th	9,310	865	150	14
3rd	9,505	883	150	14
2nd	9,505	883	-	-
1st	7,535	700	-	-
Ground	6,435	598	-	-
Lower Ground*	4,850	450	-	-
Total	92,000	8,545	2,095	195



The Ground and Lower Ground floor can be connected by an interlinking staircase.

* This floor can be used as offices or an alternative amenity use

** Communal terrace on 9th floor

- Office
- Terrace
- Core
- End of journey facilities
- Reception

Plans not to scale. Indicative only.

